

SINGLE SEX SPACES

IT'S THE LAW

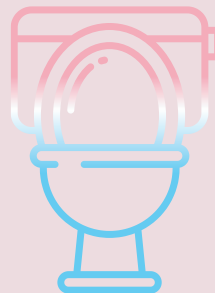
EQUALITY ACT 2010

The Equality Act 2010 uses a simple form of words that prevents blanket banning of Trans people from access to services aligned to their gender.



IT'S THE
LAW

BATHROOMS



TRANS PEOPLE CAN AND HAVE BEEN USING THE TOILETS THAT MATCH THEIR GENDER FOR DECADES WITHOUT ISSUE.

The media-generated 'debate' about public toilets is having a negative effect on the whole LGBTQ+ community. Anyone whose appearance doesn't fit with stereotypical ideas around what men or women look like are increasingly being challenged simply for using the loo.

Stonewall Truth about Trans

UK PRISONS

TOTAL NUMBER OF PEOPLE IN UK PRISONS

84,372 81,057 Male **268** Identify as
3,315 Female Trans

48 Trans people are housed in female prisons

5 Identify as transgender female

Her Majesty's Prison and Probation Service
Offender Equalities Annual Report 2022/23



RISK ASSESSMENT IS WORKING

"People say 'Yes, but what if some man decides to dress as a woman and goes to the refuge', and I'm like 'That's why we've got risk assessments.'"

Respondent to the Stonewall report Supporting trans women in domestic and sexual violence services

WOMEN'S REFUGES

Domestic and sexual violence services in England and Wales have been supporting trans women in their single-sex women-only services for some time with many taking proactive steps to ensure their services are trans-inclusive.

Stonewall report Supporting trans women in domestic and sexual violence services